



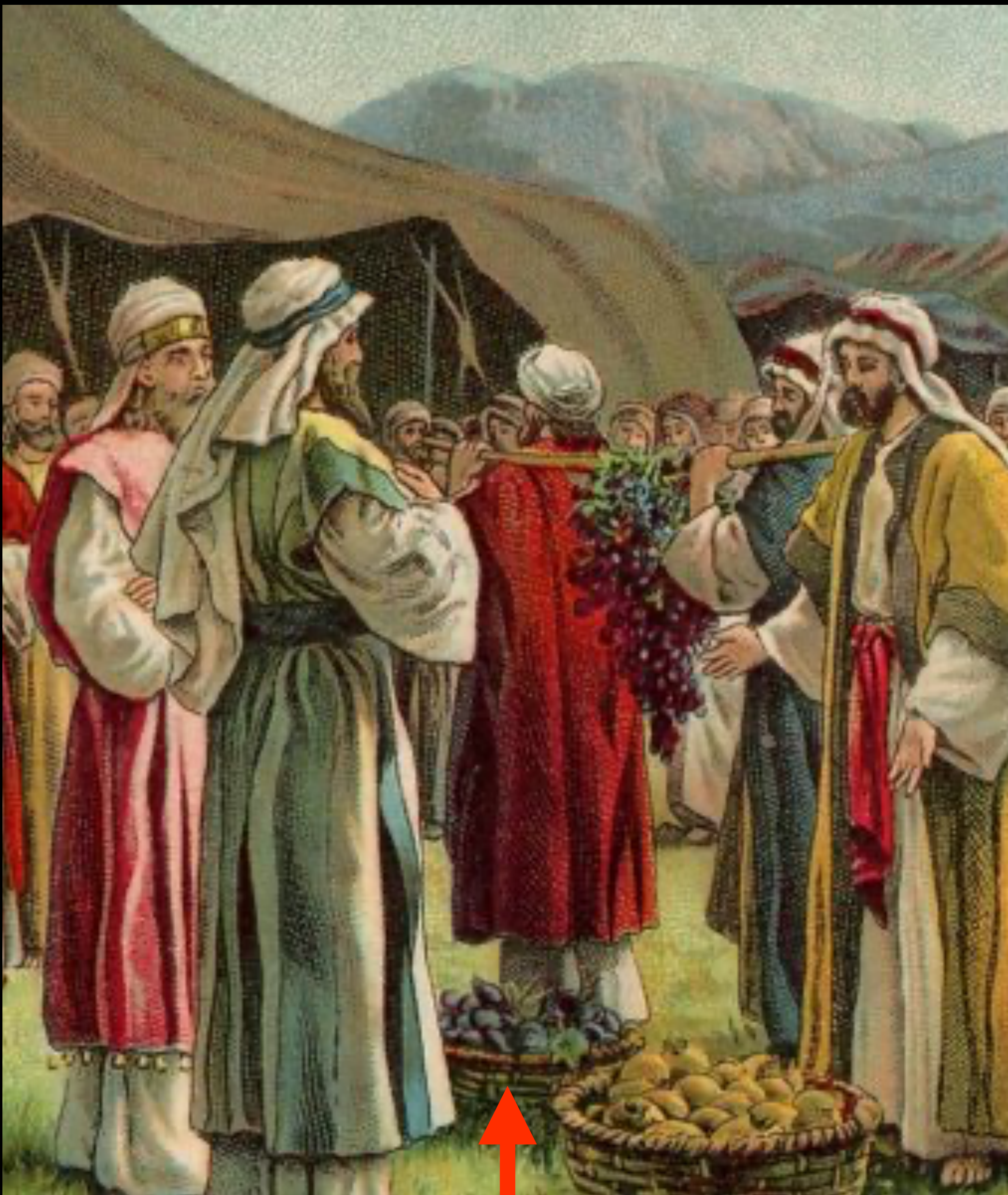
GROWING FRUIT FROM EDEN

# FIGS FOR THE HOME GROWER

“And the eyes of them both were opened, and they knew that they were naked; and they sewed **fig leaves** together, and made themselves aprons.”

–GENESIS 3:7



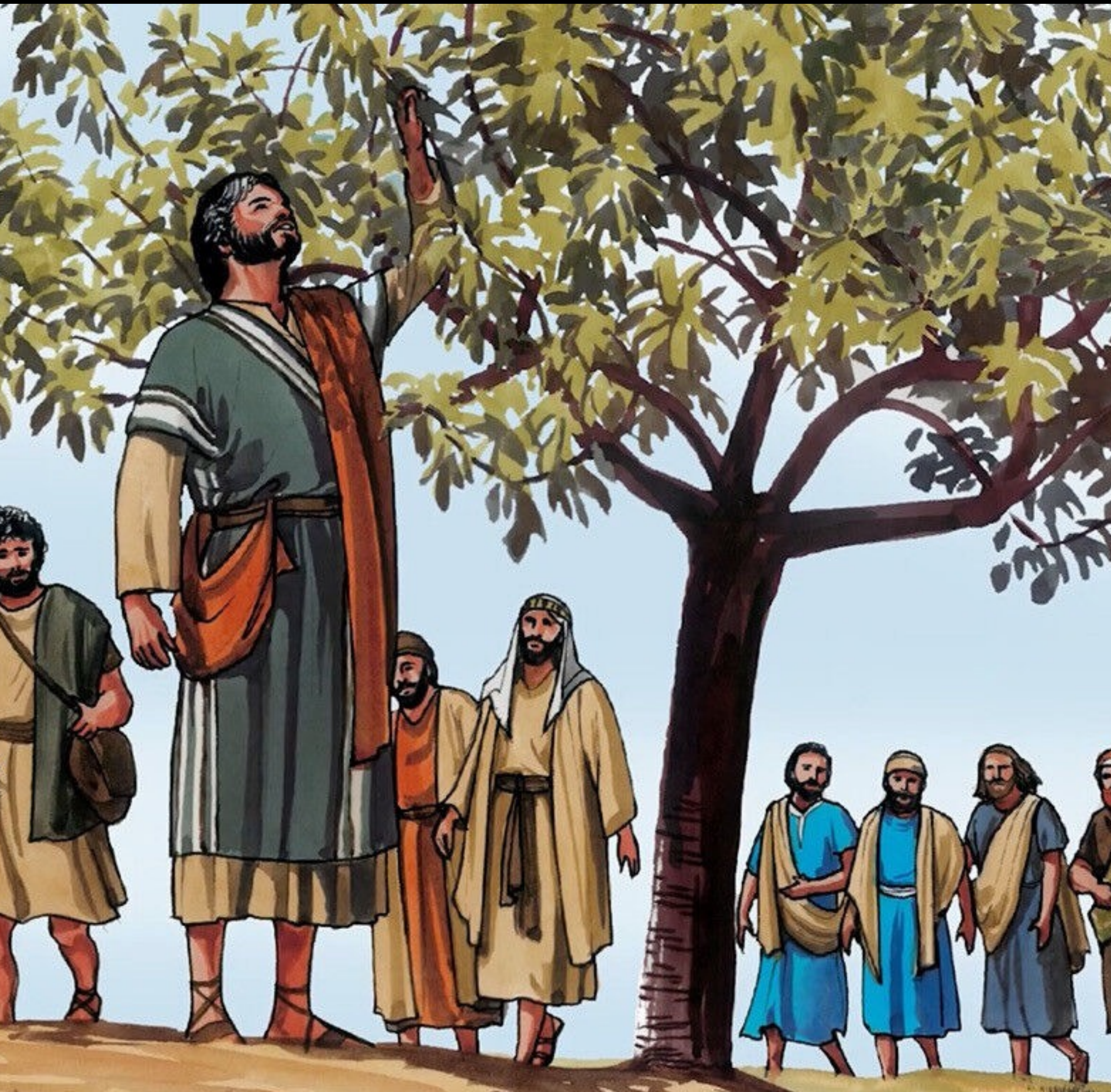


“And they came unto the brook of Eshcol, and cut down from thence a branch with one cluster of grapes, and they bare it between two upon a staff; and they brought of the pomegranates, and of the figs.”

–NUMBERS 13:23

“And Judah and Israel dwelt safely, each man under his vine and his fig tree, from Dan as far as Beersheba, all the days of Solomon.”

–1 KINGS 4:25



“He spake also this parable; A certain man had a fig tree planted in his vineyard; and he came and sought fruit thereon, and found none.”

—LUKE 13:6

“And seeing a fig tree afar off having leaves, he came, if haply he might find any thing thereon: and when he came to it, he found nothing but leaves; for the time of figs was not yet. And Jesus answered and said unto it, No man eat fruit of thee hereafter for ever.”

—MARK 11:13-14

# WHY GROW FIGS? WHY ARE THEY POPULAR?

1. Well-ripened figs are delicious!  
Unobtainable from grocery stores. Perfect figs must come straight from the tree!
2. Aesthetically beautiful
3. Highly adaptable to many different regions
4. Fast growing and early fruiting
5. Relatively low maintenance
6. Relatively few pests and diseases (No spray)
7. Good for preserving
8. Easy to propagate
9. Vibrant hobbyist community



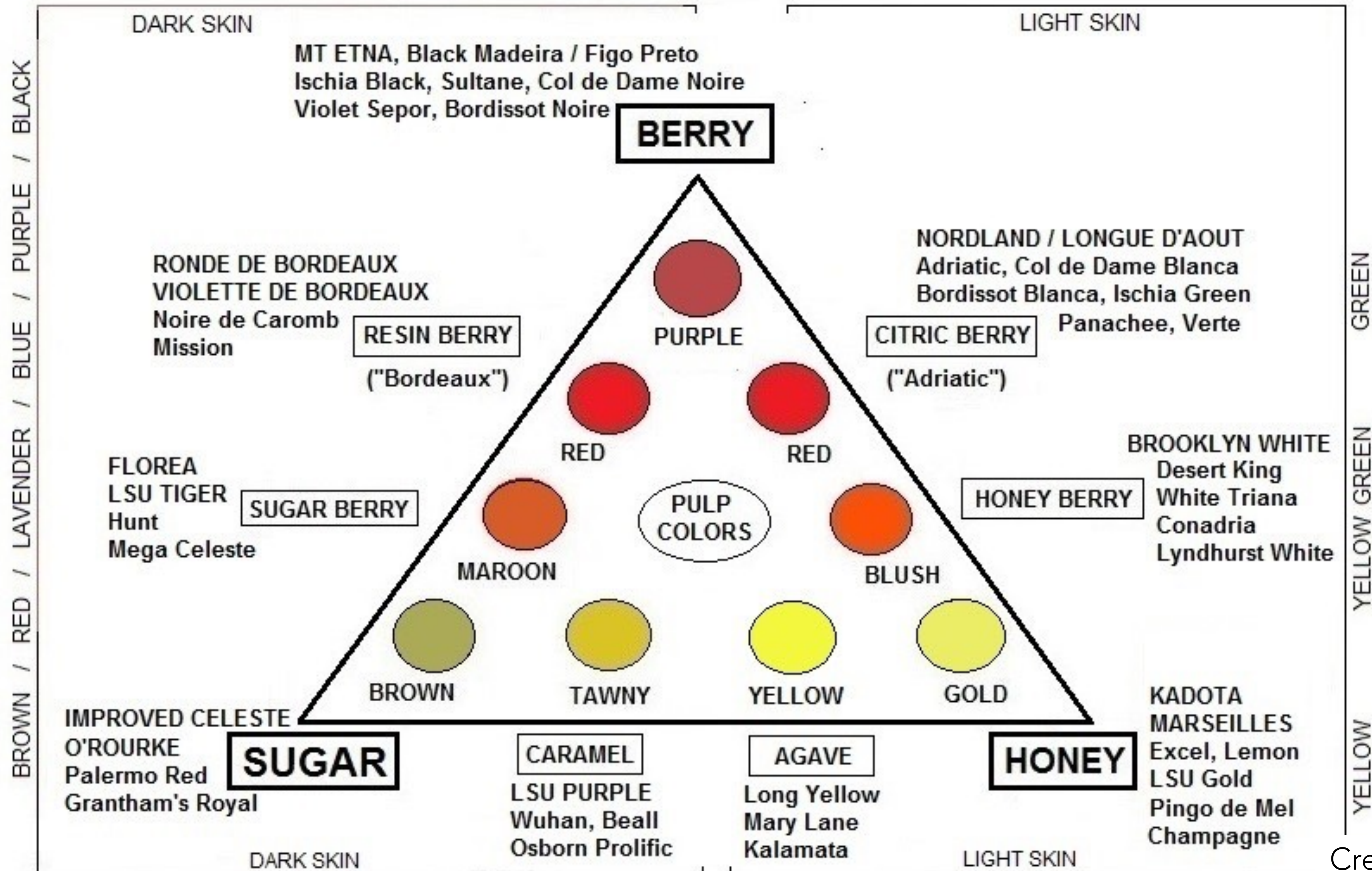
**DARK FIGS**



**LIGHT FIGS**



# FIG FLAVORS, PULP & SKIN COLORS





JAM ON A TREE

# HOW TO PICK A RIPE FIG



Stiff Neck



Fig Latex



Swelling

JAM ON A TREE

# HOW TO PICK A RIPE FIG



Soft Neck, Soft Skin,  
Swelling, Hang-time



Color, Honey



Dark Interior, Pith

THE OSTIOLE

# THE FIG'S "EYE"



Closed eye



Plugged eye



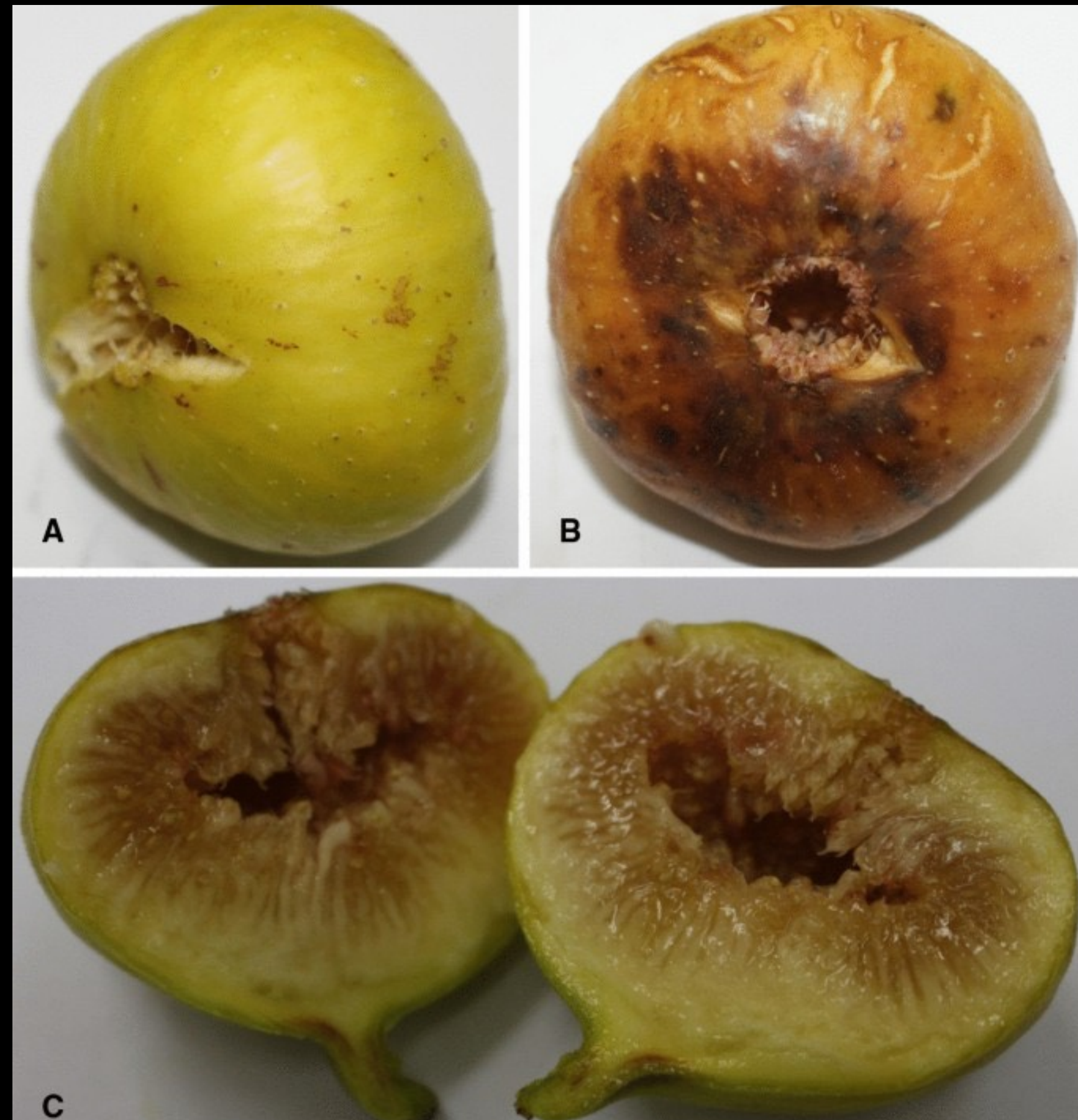
Open eye

THE OSTIOLE

# OPEN EYE PROBLEMS



Humidity



Pathogens



Pests

AESTHETICS

# LANDSCAPING WITH FIGS



Variegation (Stripes)

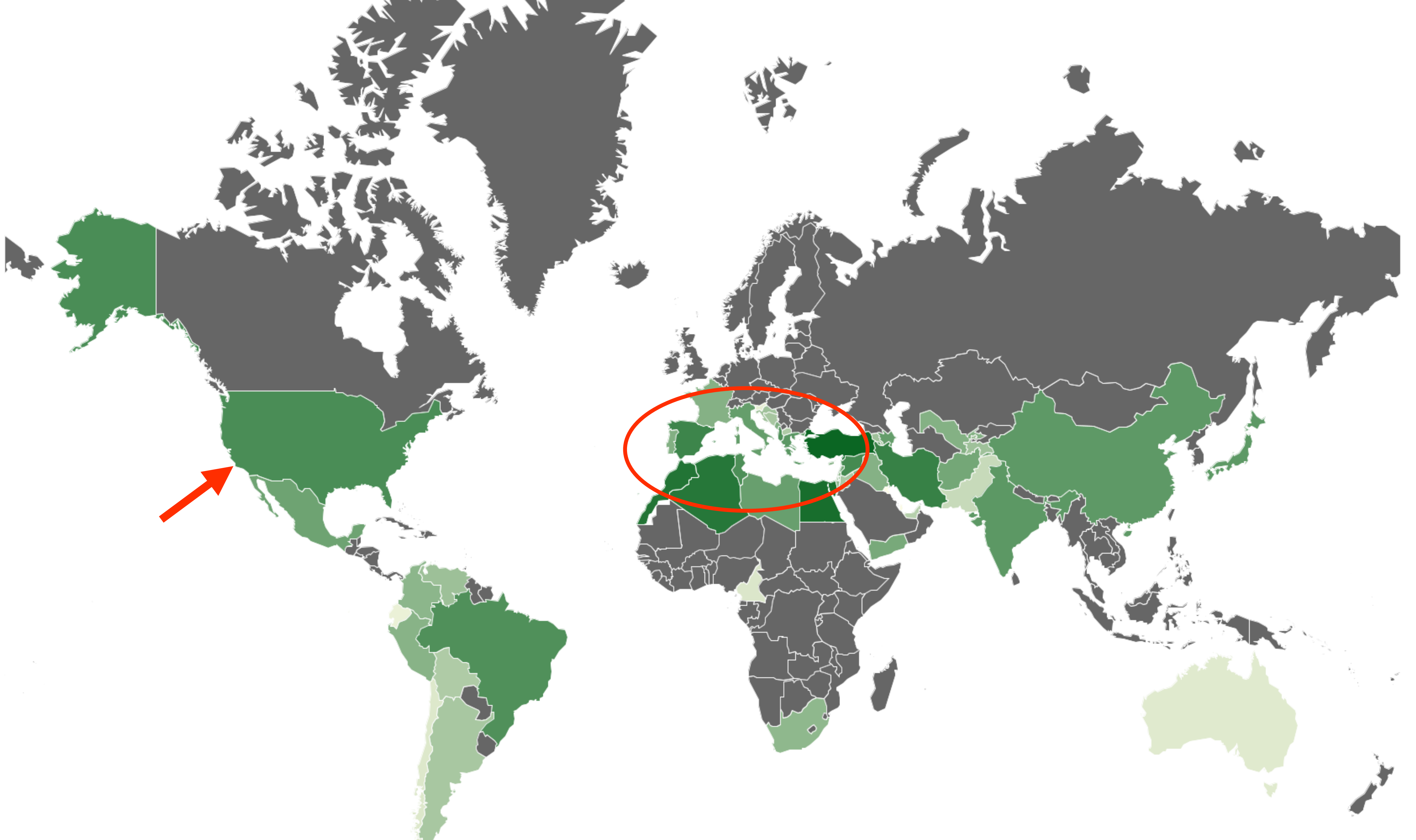
AESTHETICS

# LANDSCAPING WITH FIGS



Espalier





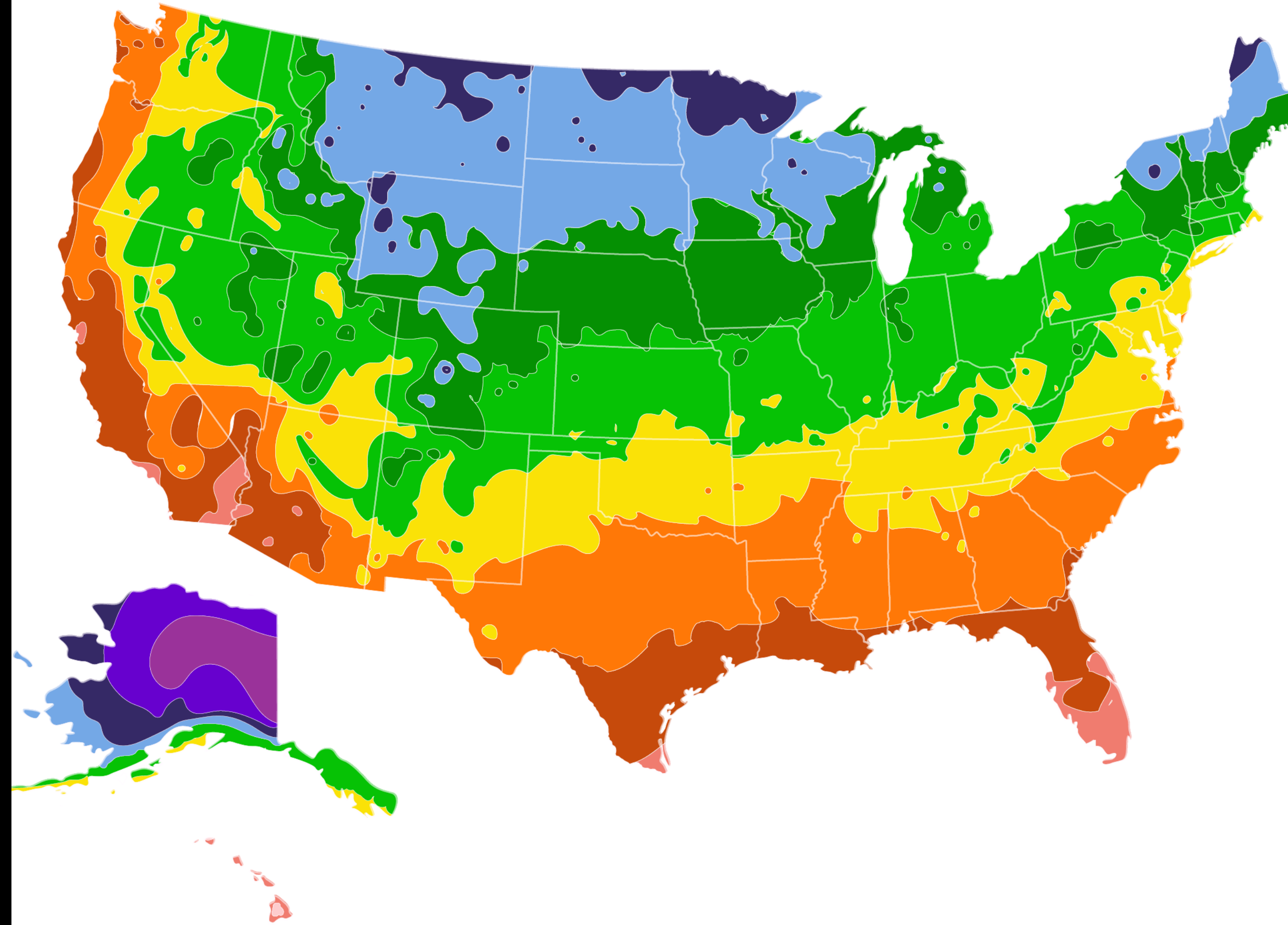


# MAIN FACTORS TO CONSIDER

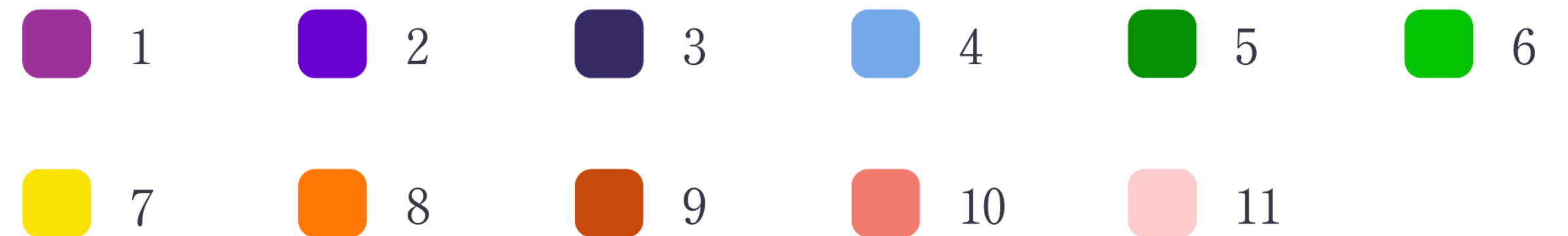
<b>Issues</b>	<b>Solutions</b>
1. Cold-hardiness and Winter Damage	Growing Site, Cold-Tolerant Varieties, Winter Protection, Thermal Mass
2. Spring Freezes	Early-Ripening Varieties, Winter Protection, Containers
3. Length of Growing Season	Early-Ripening Varieties, Ground Covers, Containers, Greenhouse
4. Rain and Humidity	Closed-Eye, Low Hang-Time Varieties, Greenhouse
5. Pests and Disease	Prevention, Deterrence, Orchard Hygiene

# COLD TOLERANCE

- Dormant branches survive down to 15-20F. Roots can endure colder.
- Hardy to Zone 8
- Roots survive in Zones 6-7
- Requires winter protection in Zone 5
- Containers only in Zones 4 and below



Growing Zone



# PROTECTING THE WOOD

1. Figs grow on current year's growth.
2. Tree can fruit the first year.
3. Dieback of above-ground wood in winter may not eliminate fruit that year, but severely curtails it.
4. Figs can regrow from the roots, but it sets the tree back by at least 1 month.
5. **Select early-ripening varieties then keep the wood alive!**

KEEP THE WOOD ALIVE

# WINTER PROTECTION



Plant by a Structure

KEEP THE WOOD ALIVE

# WINTER PROTECTION



Bucket



Wrapping



Mulch

KEEP THE WOOD ALIVE

# WINTER PROTECTION



Burying



Thermal Mass



Indoor Storage

KEEP THE WOOD ALIVE

# WINTER PROTECTION



RESULTS OF WINTER DIEBACK

# TREE VS. BUSH FORM





# SPRING-TIME CHALLENGES

1. Figs have low chill-hour requirements, so can come out of dormancy prematurely.
2. This can be a problem in areas with warm-freeze cycles in the spring. (i.e. The South!)
3. Greenhouses and containers help mitigate this problem.
4. Site selection may help prevent premature breaking of dormancy.
5. Some varieties may be less prone to premature awakening.

# RIPENING TIME

1. Figs ripen ideally in the 80-95F range.
2. Too cool and ripening slows and fruit has less sugar.
3. Too hot and the tree gets stressed and the fruit can drop or sour.
4. Based on when spring begins, pick varieties that will ripen in the summer months.
5. Heat retaining ground covers, greenhouses, and spring rotation of containers can push ripening date earlier. (Required for cooler zones.)

# BREBA AND MAIN CROP

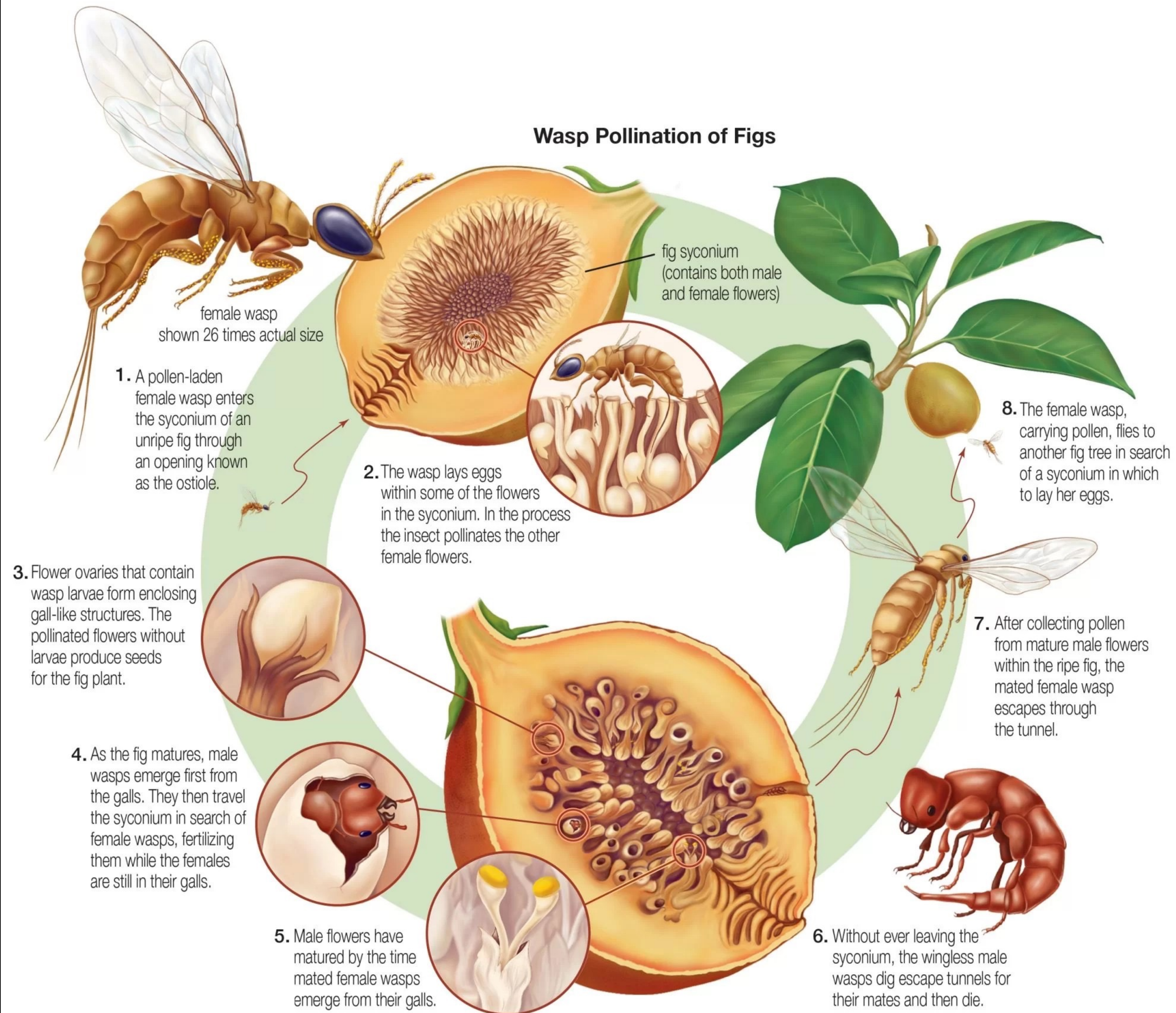
1. The breba crop are figs that ripen in early summer from last year's wood.
2. Main crop usually ripens late summer on current year wood.
3. Not all varieties produce brebas.
4. Breba fruit may vary dramatically from main crop fruit.
5. Some varieties produce heavy breba crops, some only a few, and others will only produce the main crop.
6. Some brebas don't develop the rich flavor of the main crop, but sometimes varieties are grown specifically for their brebas.  
(Desert King)

# POLLINATION REQUIREMENTS

1. **Common Figs** are varieties that do not require pollination to ripen fruit.
2. **"San Pedro"-type** figs will produce a large crop of breba without pollination, while the main crop requires pollination. (Desert King)
3. **"Smyrna"-type** figs require pollination in order to ripen any fruit. (Calimyrna)
4. In most places, common figs are the only type that are viable for home growers.
5. How are figs pollinated?

# CAPRIFICATION

- Requires the “*Blastophaga psenes*”
- Fig wasps only live in parts of California and the Mediterranean.
- Viable fig seeds sink, infertile seeds float.
- The crunch of figs are from the seeds, NOT from dead wasps!
- Dead wasps are broken down enzymatically and absorbed back into the fruit.
- Are caprifigged figs truly vegetarian?



RAIN AT RIPENING TIME

# HAZARDS OF HUMIDITY



Cracking/Splitting



Dilution/Texture



Mold/Rot

# CONTAINERS OR IN-GROUND?

- Size control
- Climate control
- Moisture control
- Mobility (Fig shuffle)
- Production yield
- Root pruning
- Out-of-range varieties
- Grafting



# VARIETY SELECTION FACTORS

1. Widely adaptable to cooler zones
2. Common fig (No pollination)
3. Early-ripening
4. Rain/Humidity/Split Resistant (Small/closed eye)
5. Able to grow back after dieback to fruit the same year
6. Good flavor
7. Productive
8. Ease of care
9. Reasonably obtainable



# START HERE: TOP VARIETAL FAMILIES

1. **Mt. Etna Family:** Malta Black, Hardy Chicago, Red Lebanese Bekaa Valley, Marseilles Black, Takoma Violet, etc.
2. **Celeste Family:** Celeste, Improved Celeste, TN Mountain Fig
3. **LSU Family:** LSU Tiger, LSU Hollier, LSU Scott's Black, LSU Purple, LSU Gold, LSU Champagne, LSU O'Rourke, etc.
4. **Bordeaux Family:** Ronde de Bordeaux, Violette de Bordeaux, Nero 600m, Negronne, Valle Negra, Beers Black

# OTHER TOP VARIETIES

1. Texas Peach
2. Smith
3. Florea
4. Olympian
5. Green Michurinska
6. Bourjassote Grise
7. White Madeira #1
8. Colonel Littman's Black Cross



PESTS AND DISEASES

# RUST & FMV (MITES)



Rust



Fig Mosaic Virus (Mites)

PESTS AND DISEASES

# BIRDS & VERMIN

Bugs/Birds



Organza bags

Rodents/Opossums/Raccoons



Traps

Other Vermin



Dog/Cat

STORING THE BUMPER CROP

# PRESERVATION



Freezing, Freeze Dry, Canning, Dehydrating, Preserves, Jams, etc.

GROWING MORE TREES

# PROPAGATION



Cuttings



Air Layering



Grafting

# HOW MY FIGS PAY FOR THEMSELVES



Your Fig Trees are Our Business

Home Browse ▾ Sell

Hello CrumbSaver ▾ Messages

About Us Help Tips Articles

Enter Keywords

Search

Advanced

Welcome to figBid, the safest open market dedicated to the fig. Buy, Sell, and Auction Fig Trees & Fig Tree Cuttings 24/7.

Here's how to [make figBid an app](#) on the home screen of your mobile device.

## Categories

Fig Trees 274

Fig Tree Cuttings 1073

Bulk Fig Cuttings 3

Supplies 48

Other Fig Related 42

Other Fruit (Non-Fig) 101

SALE



The Fig Hunter Collection - TFH-1063 -...

BUY IT NOW

\$50.00

# AVAILABLE:

5



Ponte Tresa Fig Tree Cuttings (2)

BUY IT NOW

\$12.00

# AVAILABLE:

11



SacredOrigin's Rodgrod Fig Tree Cutti...

CURRENT BID

\$18.50

TIME REMAINING

2 Days 02:33:12

# PLACES TO BUY

1. [FigBid.com](http://FigBid.com)
2. [kremp.com](http://kremp.com)
3. [offthebeatenpathnursery.com](http://offthebeatenpathnursery.com)
4. [treesofjoy.com](http://treesofjoy.com)
5. [justfruitsandexotics.com](http://justfruitsandexotics.com)
6. [ediblelandscaping.com](http://ediblelandscaping.com)
7. [raintreenursery.com](http://raintreenursery.com)
8. [figaholics.com](http://figaholics.com)
9. [sujofarms.com](http://sujofarms.com)
10. [almostedenplants.com](http://almostedenplants.com)
11. [2angelsmushrooms.com](http://2angelsmushrooms.com)
12. [gardencrochet.com](http://gardencrochet.com)
13. [facebook.com/foothillfigs/](https://facebook.com/foothillfigs/)



# RESOURCES & COMMUNITY

1. [OurFigs.com](http://OurFigs.com)
2. [figs4funforum.arghchive.com](http://figs4funforum.arghchive.com)
3. [4figlovers.com](http://4figlovers.com)
4. [figdatabase.com](http://figdatabase.com)
5. [mountainfigs.net](http://mountainfigs.net)
6. [foodgardenlife.com/grow-figs-home](http://foodgardenlife.com/grow-figs-home)
7. Countless fig groups on Facebook

# FIG YOUTUBE CHANNELS

1. @Figaholics
2. @TheMillennialGardener
3. @JSacadura
4. @pafigs2098
5. @danfoster4043
6. @RossRaddi
7. @offthebeatenpathnursery9092
8. @FigLifedotcom
9. @the1figman120
10. @EnlightenmentGarden
11. @greenshootsnursery3213
12. @bassgardener
13. @4figlovers678
14. @BenBSeattle
15. @oregonfigs3314
16. @2angelsmushrooms
17. @figsandchocolate5553
18. @gofigurefarm749



GROWING FRUIT FROM EDEN

# FIGS FOR THE HOME GROWER